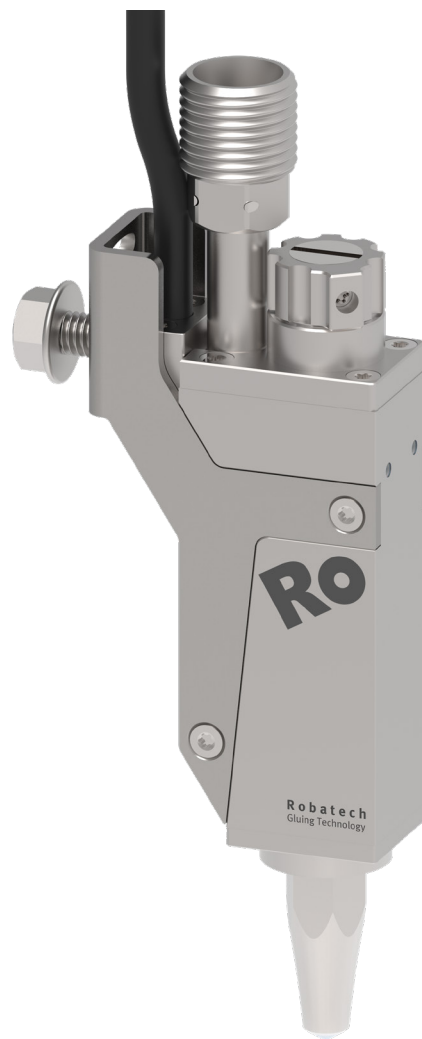


# RO

## Cold Glue Jetting Heads Sempre 15 / 30

flexible | precise | durable



**Robatech**  
Gluing Technology

## Sempre 15 / 30

### Compact Application Head in Different Design Variants

The electrically driven **Sempre 15** and **Sempre 30** cold glue application heads are designed for contact-free application in dot, bead, and continuous patterns of medium-viscosity dispersion adhesives. With their precise adhesive application and high switching frequencies, they are ideal for applications in the graphical and converting industry. Thanks to their compact installation dimensions, they can be easily and flexibly integrated.

#### Fast and Precise

The **Sempre 15** and **Sempre 30** ensure precise dot application with short distances even at high machine speeds. Furthermore, the optimized nozzle geometry ensures excellent cut-off behavior. The integrated stroke adjustment with scale is separated from the adhesive port and ensures precise and repeatable fine adjustment of the adhesive amount even under high pressure.

#### Durable and Efficient

The robust stainless steel design ensures a long service life and simplifies maintenance. Additionally, the vertical adhesive delivery from inlet to outlet reduces the mechanical stress on the adhesive within the application head. The optional CleanStart nozzle cover prevents adhesive drying at the nozzle outlet. This function supports a fast start up after an extended

interruption and minimizes the cleaning effort. The application head can be purged near the head for testing or cleaning purposes using an optional manual pushbutton.

#### Two Design Variants

The **Sempre 15** is used for applications up to 15 bar and 24 VDC using PLC, while the **Sempre 30** supports applications up to 30 bar and 6 VDC with overexcitation.

#### Your Advantages

- Increased efficiency and productivity through fast start up and minimum maintenance effort
- Improved product quality through precise and clean adhesive application at high machine speeds
- Flexible integration thanks to a compact and narrow design
- Precise fine adjustment of the adhesive amount through integrate stroke adjustment
- Fast function tests thanks to an optional manual pushbutton, easy to retrofit
- Modular design with the following options: Product guide, trigger, bracket, CleanStart function, and adhesive application monitoring



### Technical Data

	Sempre 30 (6 VDC)	Sempre 15 (24 VDC)
Adhesive pressure	Max. 30 bar	Max. 15 bar
Adhesive	Dispersion adhesives D1 and D2	
Adhesive viscosity	Max. 4,000 mPas	
Operating cycles	1,000 million	
Switching frequency	Max. 500 Hz	Max. 200 Hz
Adhesive port	M16 x 1.5 high pressure or Ø 8 mm low pressure	
Adhesive outlet	1 ms	2.5 ms
Nozzle diameter	0.2 - 1.0 mm	
Supply voltage	6 VDC	24 VDC
Electrical power	5 W	19 W
Actuation	AS 50, AS 60	PLC, AS-IK 40, AS 30
Degree of protection	IP54	

Robatech AG, Headquarters  
 Pilatusring 10  
 CH-5630 Muri  
 Switzerland  
 Tel. +41 56 675 77 00  
 info@robatech.ch  
 www.robatech.com

**Robatech**  
 Gluing Technology