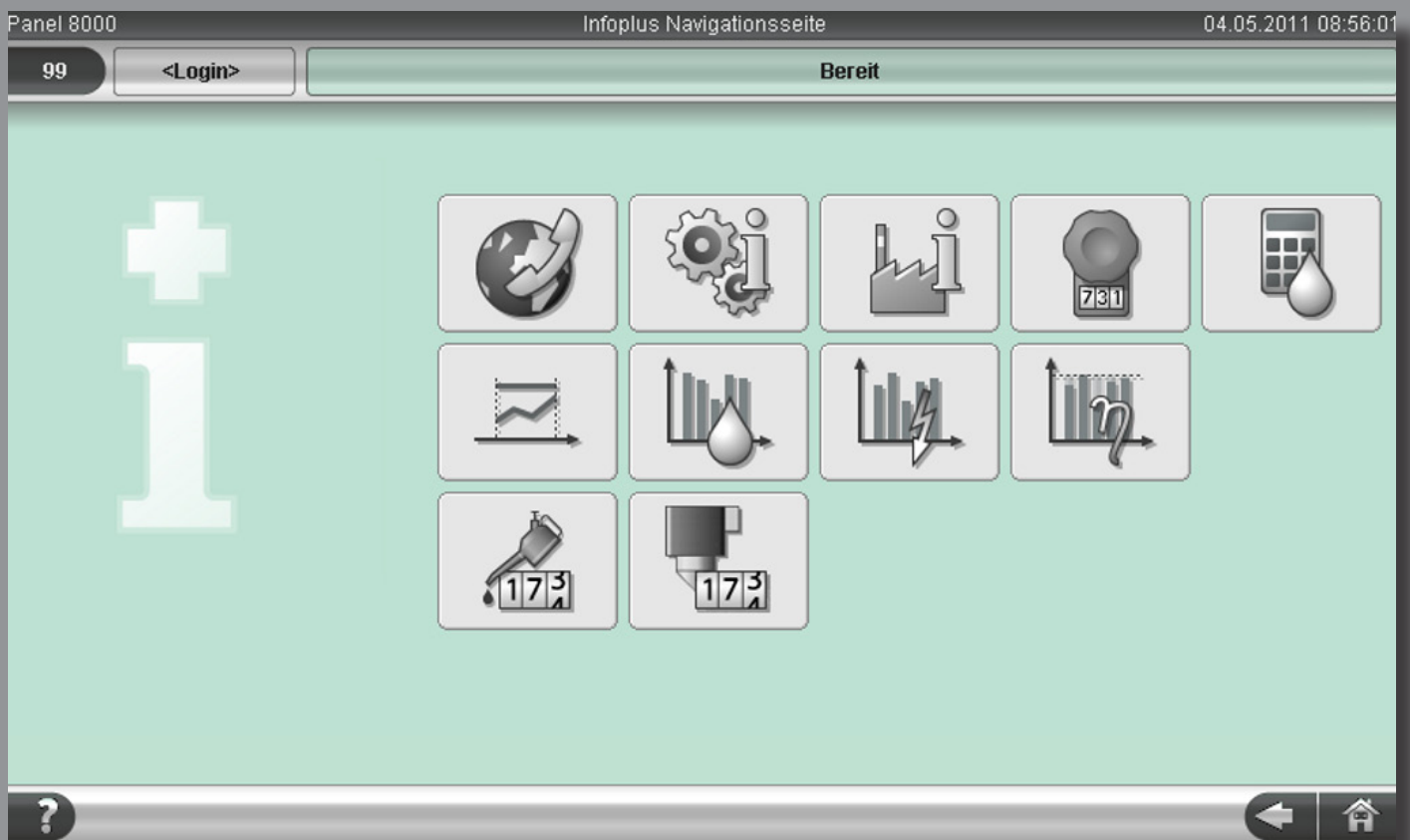
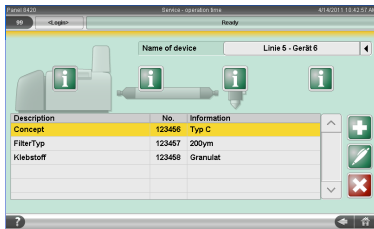


## Factory Data Software InfoPlus

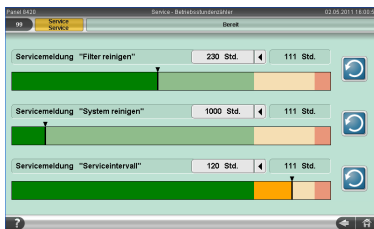
Information | protocols | warnings |  
consumption data



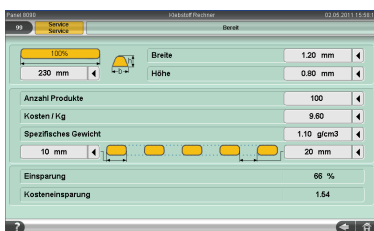
## Factory Data Software for RobaVis



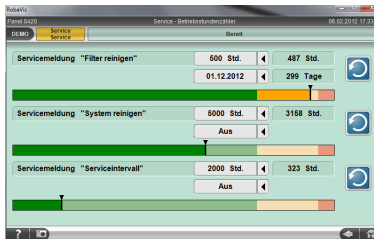
Configuration data



Maintenance



Preventive maintenance



Adjustment points by means of counter

The new ICSNet electronics with RobaVis touch screen now permits to save, display and communicate more data. InfoPlus is an important part of the life-cycle services which we offer under the brand name of RobaPlus.

InfoPlus permanently records data of the adhesive system to create a log, calculate consumption data and generate messages for preventive maintenance. It serves at the same time as a data base for contact and spare-parts. The evaluations and presentations are adapted to the Weihenstephan standard.

### Characteristics

#### ■ Contact data

A library of the worldwide Robatech service partners is filed here, and an editable segment for individual contacts is also available.

#### ■ Configuration data

The installed components and the pertaining spare parts can easily be looked up to facilitate communications with our organization.

#### ■ Adhesive calculator

This serves to calculate application patterns and to optimize the adhesive consumption.

#### ■ Trend data

Recorded heating curves and outputs enable the technicians to identify changes, detect possible causes of nonconformities and take preventive measures.

#### ■ Adhesive quantity

By means of the (optionally) installed throughflow meter the adhesive consumption quantities per piece, shift, day, month are recorded and displayed.

#### ■ Energy consumption

The power consumption of the entire system is measured and shown in different tables.

#### ■ Efficiency

The statuses of switched-on, ready for operation, disturbance are recorded and displayed in an efficiency table.

#### ■ Maintenance

Wear components such as filters and pumps are presented over time diagrams, and valves or applicator heads over the

number of switching operations. A service message is generated when the end of the useful life is approached. Measures taken by the operator are recorded in the log.

### Benefits

- Easy access to system data
- Central information system
- Operator support
- Service support
- Preventive maintenance
- Little documentation required
- Direct contact information
- Spare-parts information
- Adjustment points by means of counter

Robatech AG, Headquarters  
Pilatusring 10  
CH-5630 Muri  
Switzerland  
Tel. +41 56 675 77 00  
info@robatech.ch  
www.robatech.com

Robatech USA Inc.  
1005 Alderman Drive Ste 108  
USA-Alpharetta, GA 30005  
Tel. +1 770 663 8380  
info@robatechusa.com  
www.robatechusa.com

**Robatech**  
Gluing Technology