

RO

Fill System RobaFeed GranulateContainer

NEW

Jumping function | no clumping
no contamination | efficient delivery



Robatech
Gluing Technology

GranulateContainer

Trouble-free suction of adhesive granulate with the patented Jumping model

The **GranulateContainer** from Robatech is an extension to the existing **RobaFeed** product range. It stores and automatically delivers thermoplastic hotmelt adhesives in granulate form.

Function and design

The **GranulateContainer** protects the adhesive from environmental influences that could lead to contamination or clumping of the granulate and ensures that the adhesive is delivered efficiently. The interior of the white **GranulateContainer** is funnel-shaped. This shape allows the granulate to slide down. The suction probe is continuously supplied with granulate, and therefore guarantees trouble-free adhesive delivery. There is a large observation window in the lid of the container for monitoring the fill level; automatic monitoring is also available. The two installed supports enable the suction probes to be neatly guided to allow two melters to be filled from one **GranulateContainer**.

Models

The **GranulateContainer** is available in two different models. The basic model is equipped with the above-mentioned features. With the Jumping model, the granulate for processing is stored in a special sack. In the base of the **GranulateContainer**, there is a lifting plate, which raises and lowers intermittently, and therefore shakes the granulate. This model is ideal when processing very sticky granulates or in hot conditions.

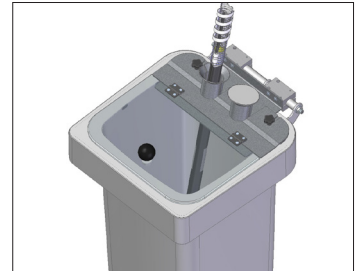
The **GranulateContainer** is a functional extension to the proven **RobaFeed** range and allows the clean and efficient delivery of thermoplastic hotmelt adhesives in granulate form in industrial production processes.

Features:

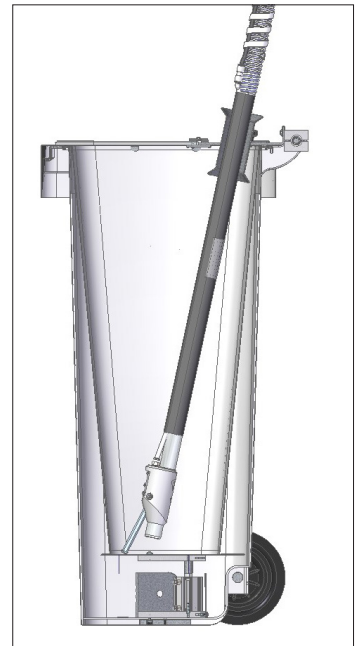
- White container
- Customized lid
- Jumping Function

Benefits:

- Perfect storage of adhesive granulate in the factory
- No contamination of the granulate
- Protected from UV radiances
- Filling of two melters out of one container
- Quick opening system to the suction probe
- Plexiglas lid (window) for visible level control
- Operation of sticky adhesive granulate even in hot environment



Customized lid



Jumper-Function

Technical Data

Adhesive forms	Granulate and pastilles
Granulate size	Ø 20 mm maximum
Pastille size	22 x 18 x 14 mm
Compressed air connection	6 bar, dry, cleaned, unlubricated, 12 mm
Compressed air consumption	Basic: no air needed Jumper: 0.5l/h at 10 kg/h feeding capacity
Storage capacity	42 kg
Dimensions	570 x 500 x 1070 mm (DxWxH)

* Function and capacity are dependent on the quality, size, shape, and stickiness of the adhesive

Robatech AG, Headquarters
Pilatusring 10
CH-5630 Muri
Switzerland
Tel. +41 56 675 77 00
info@robatech.ch
www.robatech.com

Robatech
Gluing Technology